

FOR LEASE

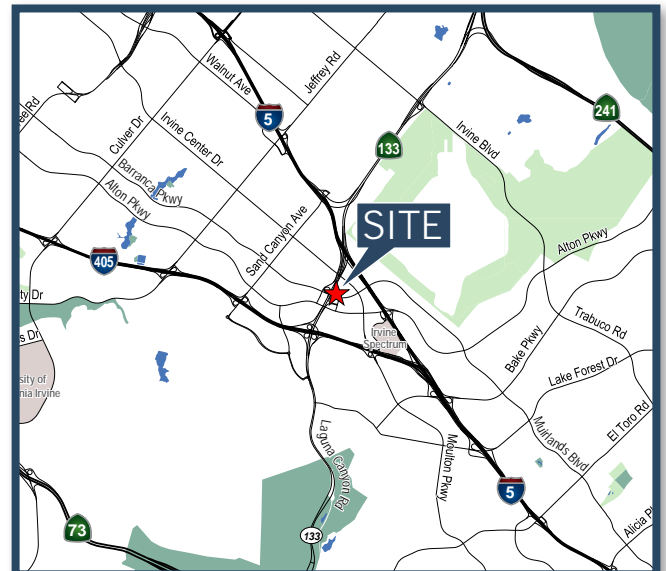
**Class A Office Building
100 Pacifica, Irvine, CA**

Voit
REAL ESTATE SERVICES



FEATURES

- Office Suites Available from 2,818 to 4,491 Square Feet
- Multiple Freeway Signage Opportunities
- Recently Renovated / Upgraded
- Close to Irvine Spectrum Entertainment Center
- Security System with After-Hours Card Access
- Extensive Glass Line
- Abundant Surface Free Parking
- Daily Day-Porter Services
- On-Site Deli
- Immediate Access to 5, 405 and 133 Freeways



Joe Winkelmann
Senior Vice President
Lic #01259378
949.263.5394
jwinklemann@voitco.com

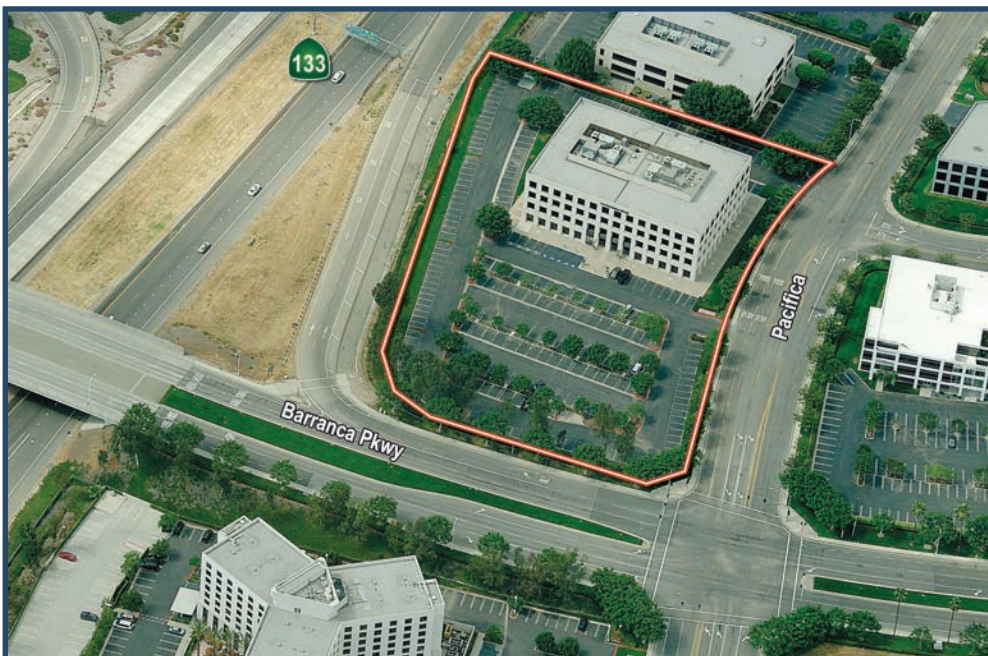
Skyler Serrano
Senior Associate
Lic #01790959
949.263.5302
sserrano@voitco.com

FOR LEASE

Class A Office Building 100 Pacifica, Irvine, CA

AVAILABILITY

| Suite | Size | Pricing PSF | Monthly Rent | Date Avail | Suite Description |
|-------|--------|-------------|--------------|------------|---|
| 205 | ±4,491 | \$2.35 FSG | \$10,553.85 | Now | 6 private offices, 1 conference room, break room, open space. |
| 300 | ±2,818 | \$2.45 FSG | \$6,904.10 | Now | Spec Suite - 4 private offices, 1 large conference room, storage, break room, large open space. |



Voit

REAL ESTATE SERVICES

Joe Winkelmann
Senior Vice President
Lic #01259378
949.263.5394
jwinkelmann@voitco.com

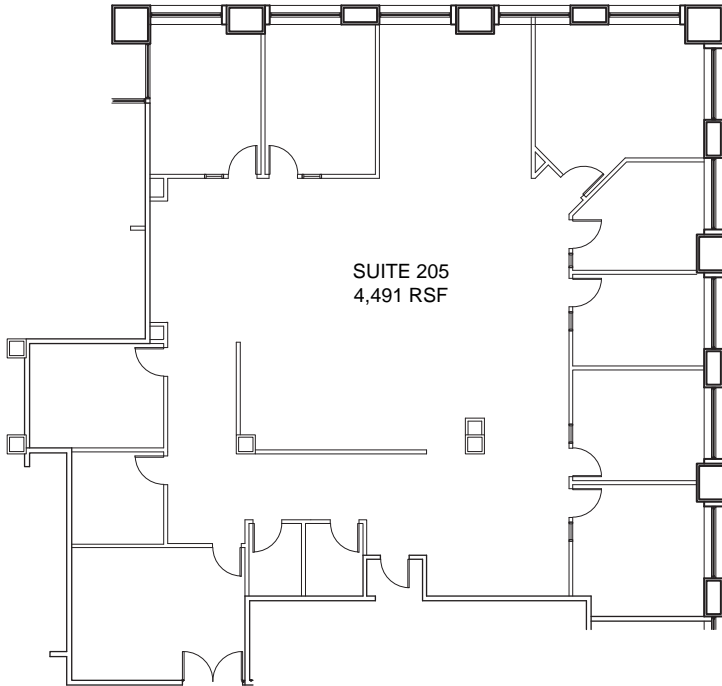
Skyler Serrano
Senior Associate
Lic #01790959
949.263.5302
sserrano@voitco.com

FOR LEASE

Class A Office Building
100 Pacifica, Irvine, CA

Voit
REAL ESTATE SERVICES

2nd Floor - Suite 205



3rd Floor - Suite 300 - Spec Suite

